

How to Upgrade Decision Point to Data Point Viewer

1. Go to the link <http://www.toadworld.com/m/freeware/1507/download?v=0>
2. This link will bring you to the log-in screen. Under the “Email Address” file, put decision_support@kennesaw.edu. Under “Password” put kennesaw1. Capitalization does matter, so type the log-in information just as you see it in this document. Click “Sign In”.

Dell Software Sign In

Or sign in with:

Email Address: decision_support@kennesaw.edu

Password: kennesaw1

Forgot your Dell Software password?

Toad World is federated with Dell Software to allow you to sign in with Dell Software credentials, which includes your old toadworld.com username and password, as well as Dell.com or SonicWALL.

Remember Me:

Sign In

Create Account

© 2016 Dell Inc. ALL RIGHTS RESERVED. Terms of Use Privacy Contact Technical Support

3. Under the download agreement screen, under “Job title”, select “Application Developer” (the first option on the drop-down list). Now, click “Submit”.

Toad Data Point Viewer v3.7 Download Agreement

Please fill in the below information to download the file.

First name: decision_support

Last name: decision_support

Email address: decision_support@kennesaw.edu

Job title: Application Developer

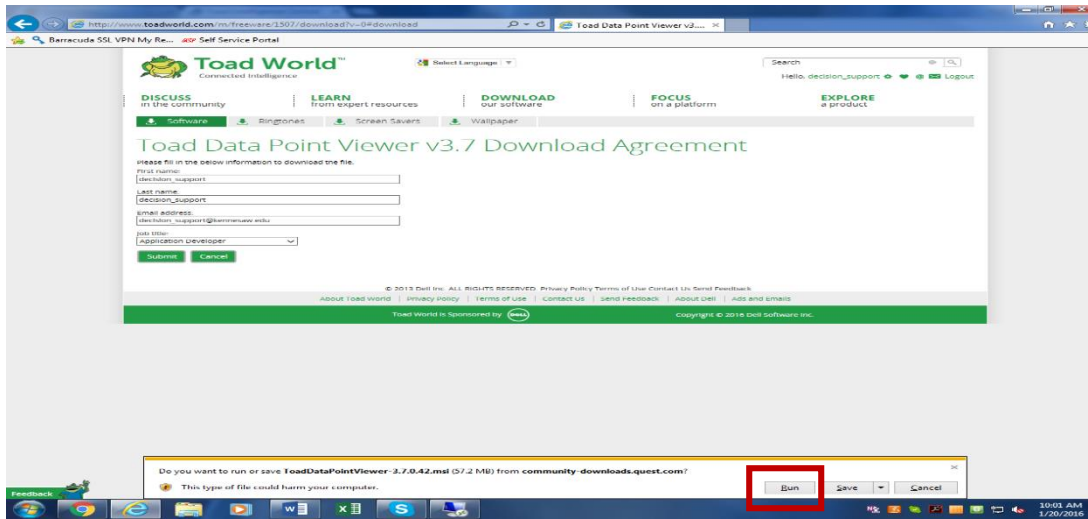
Application Developer

Backup Administrator

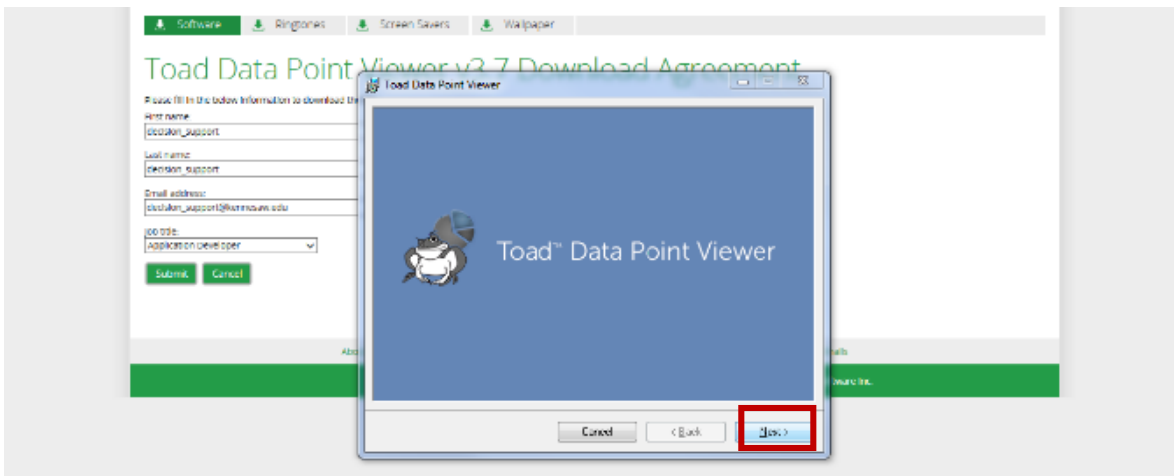
© 2013 Dell Inc. ALL RIGHTS RESERVED. Privacy Policy Terms of Use Contact Us Send Feedback

Toad World is Sponsored by Dell Copyright © 2016 Dell Software Inc.

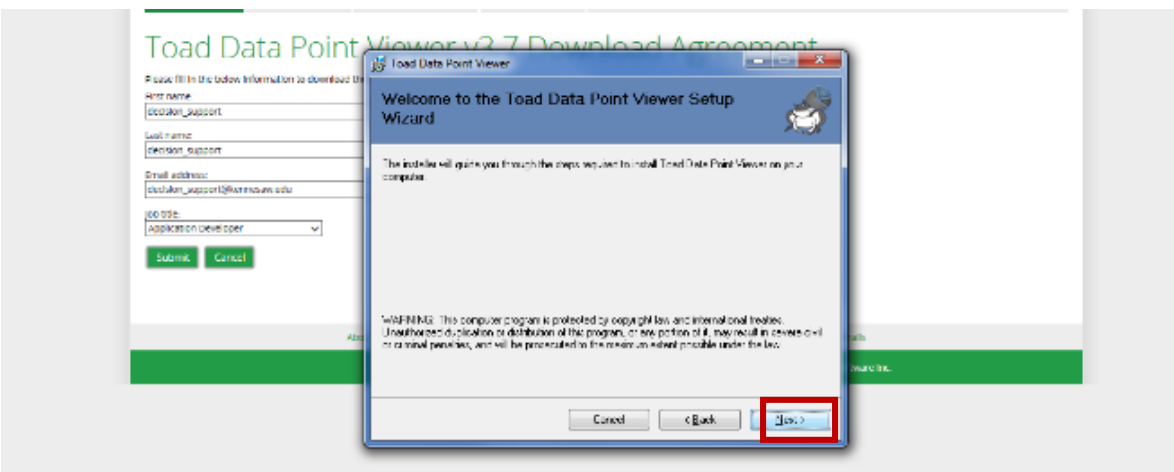
4. A download window should pop up at the bottom of your screen. Click “Run”.



5. Now, a Toad Data Point Viewer window will appear. Click “Next”.



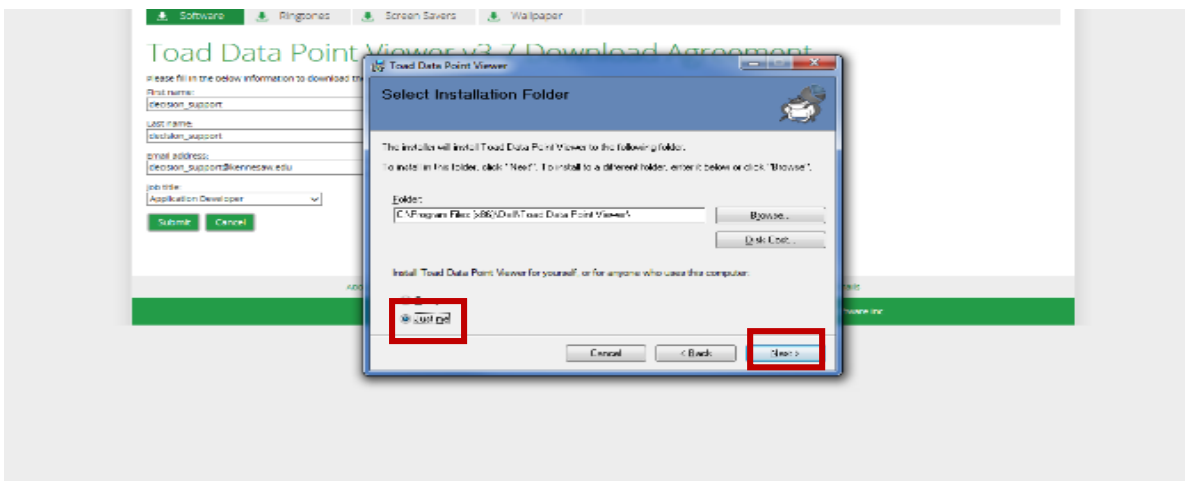
6. The “Welcome to the Toad Data Point Viewer Setup Wizard” window will open. Click “Next”.



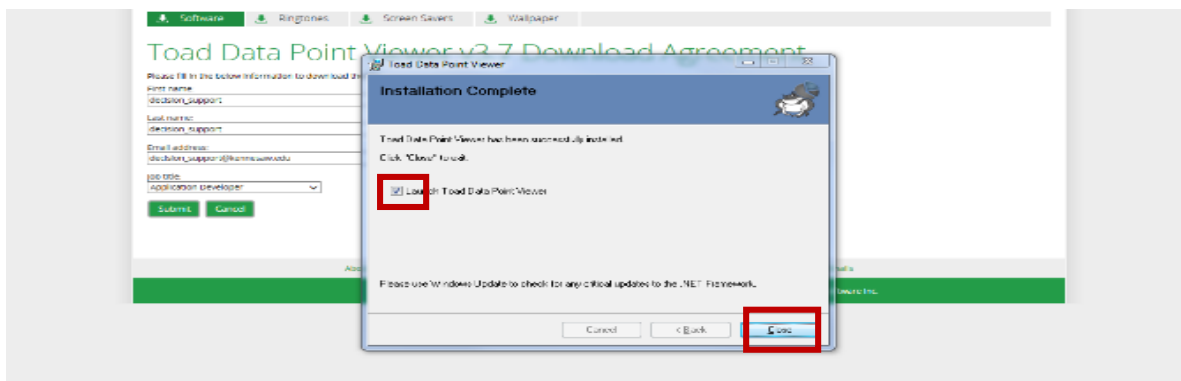
7. The “License Agreement” window will appear, just click “I Agree”.



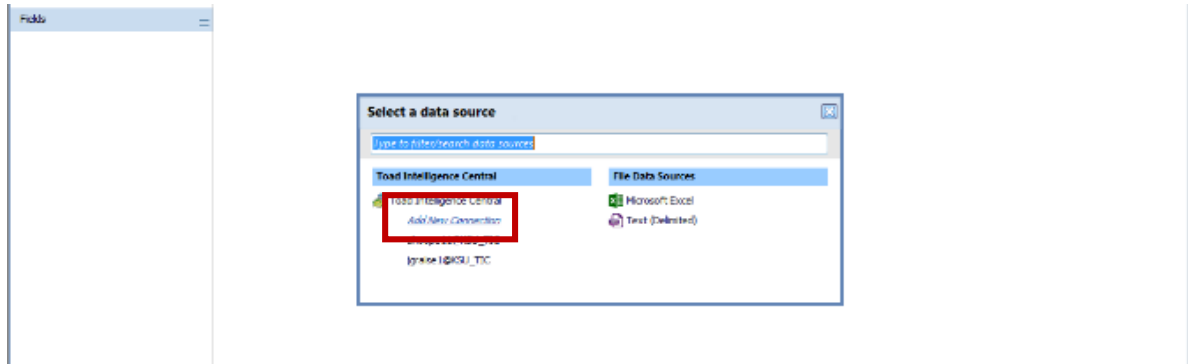
8. The next window will ask you if you want to install Toad Data Point Viewer for yourself, or for anyone who uses this computer. SELECT JUST ME! Click “Next”. Click “Next” again.



9. The installation will now complete. Leave “Launch Toad Data Point Viewer” checked and click “Close”.



- Now, minimize the download window and wait for Data Point Viewer to open. DO NOT CLICK AND OPEN IT YOURSELF! This will cause it to open two instances and result in your computer running very slow.
- A window security access will open, check the first two boxes.
- Now, Data Point Viewer will be launch. Click on “Add Connection”.



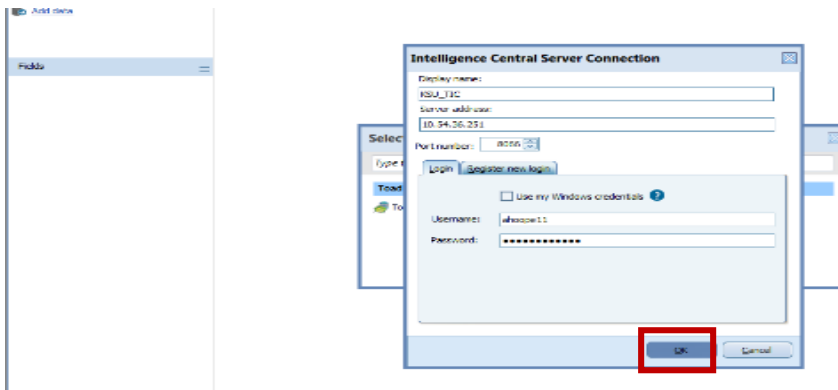
- This Intelligence Central Server Connection box will appear. Fill in the following information:

Display name: KSU_TIC (All Caps!)

Server Address: 10.54.36.251

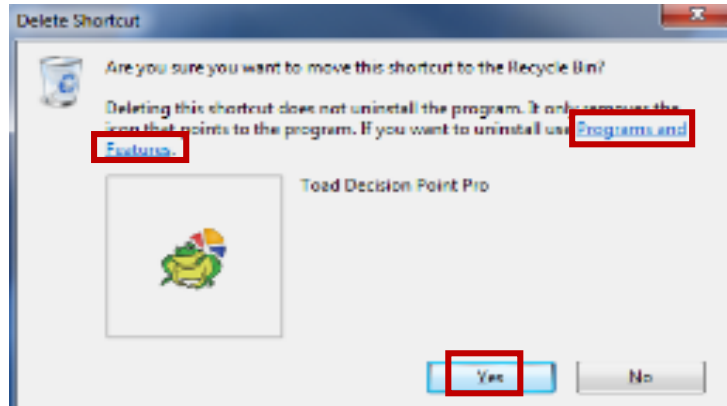
Username: The username we have sent you

Password: The password we have sent you

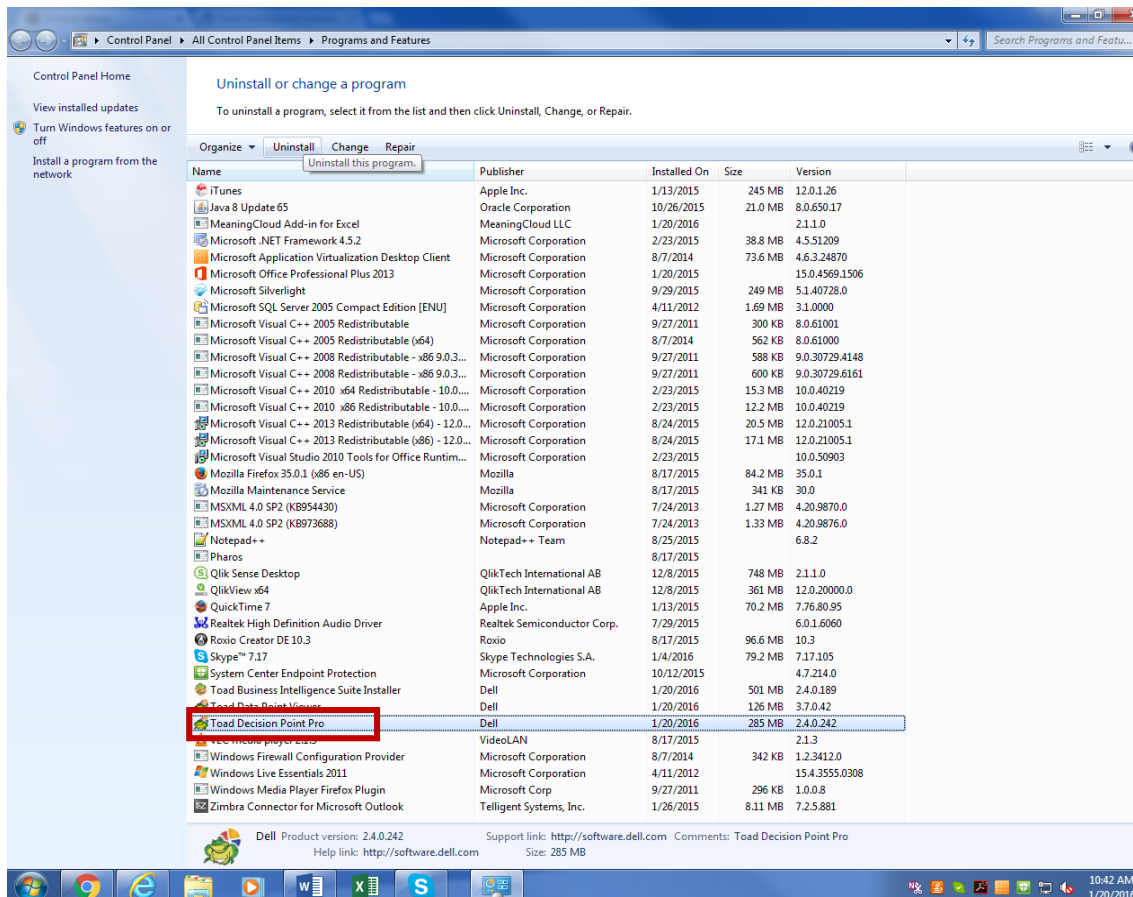


- Click “OK” . You should be set up to now use Data Point Viewer.
- We will want to delete Decision Point to avoid any confusion. To do this right click on the Decision Point icon, and click “Delete”.

16. Once you have clicked “Delete” this window will appear. Click on the blue highlighted words “Programs and Features”.



17. Scroll down to the very bottom and find Toad Decision Point Pro. Select it and click “Uninstall”.



18. Once the installer is done, Decision Point should be removed so only Data Point is available to use. If you have any questions or have any problems, please email ahoope11@kennesaw.edu. Thank you!